

YOUR RESPONSIBILITIES

Electricity plays a vitally important role in everyone's life, whether it be powering computer devices for managing our lives, cooking our food or providing heating and cooling during weather extremes.

Roxby Power supplies electricity and requires payment for it on a pay-after-use basis. Budgeting to meet the cost of electricity usage is the responsibility of every household and business.

If you find it difficult to save money to pay for your electricity Bill when it is due, Council provides some payment options that might help. For example, some people might find it easier to pay monthly instalments towards their next quarterly bill rather than having to find all of the money at once. The option to do this is available as a no-fee service provided by Council.

If you are unable to pay on-time, it's important that you contact Council BEFORE the pay-by date. If you fail to pay on-time, at the very least you will be charged additional fees for sending out Reminder Notices and if you delay for too long, you may even have your power disconnected.

Pay your bill on time to save money and avoid inconvenience!

FURTHER INFORMATION

Roxby Power operates its retail operations in accordance with A Notice of Exemption by the Minister for Mineral Resources and Energy issued pursuant to Section 34 of the National Retail Law (South Australia) Act 2011. Regulatory compliance is administered by the Essential Services Commission of South Australia.

If you require further explanation of these charges or the conditions of electricity supply generally, please contact the Council Office during office hours.

Roxby Power

A Division of The Municipal Council of Roxby Downs

Richardson Place PO Box 124 Roxby Downs SA 5725

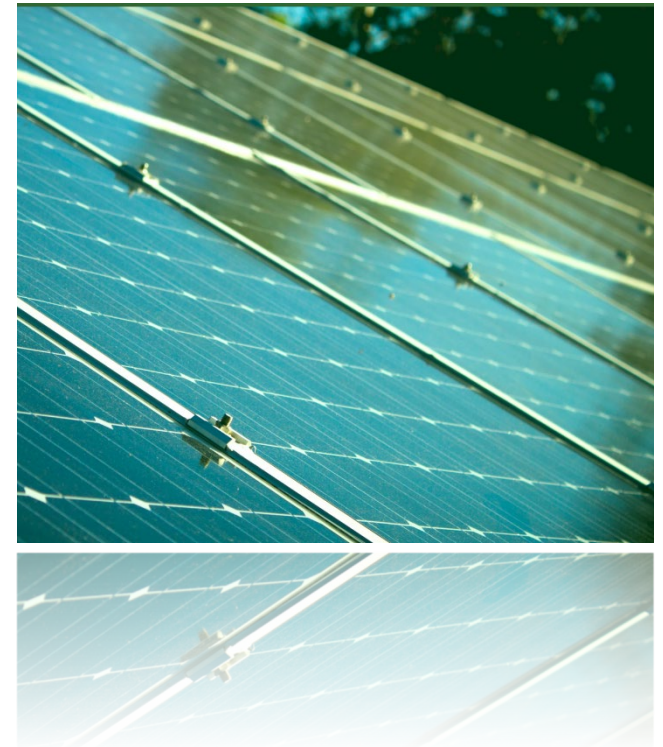
T 8671 0010

Email: roxby@roxbycouncil.com.au

Web: www.roxbydowns.sa.gov.au



Electricity Supply From 1 July 2020



INTRODUCTION

Roxby Power (a business unit of The Municipal Council of Roxby Downs) operates distribution and retail services for the supply of electricity within the Roxby Downs Township as the Power Distribution Authority pursuant to Clause 18 of the Schedule to the Roxby Downs (Indenture Ratification) Act 1982. Roxby Power also operates in accordance with a Notice of Exemption issued by the Minister for Mineral Resources and Energy pursuant to Section 34 of the National Retail Law (South Australia) Act 2011.

Council reviews all rates, fees and charges on a financial year basis as part of the Annual Business Plan. For the year to 30 June 2021, electricity tariff and charges have not been increased. The solar feed-in tariff will also remain unchanged.

In setting prices, Council needs to take into account a number of factors, including:

- Operating commercially and ensuring that an adequate allowance is made to cover the depreciation of electricity distribution assets.
- Cost of living (inflation) impacts.
- Changes in operating overheads resulting from a rise or fall in the consumption of electricity.
- Complying with the Roxby Downs (Indenture Ratification) Act 1982 which benchmarks Roxby's power prices with reference to metropolitan Adelaide plus a maximum 10 percent premium.

The existing Solar Feed-in Tariff has been continued at its current rate.

TARIFFS & CHARGES

Unless otherwise noted, the following Electricity Tariffs, including GST, will be effective from 1 July 2020 and will be included in the **next** electricity billing period (quarterly or monthly as applicable).

Tariffs for Customers < 160 MW.hr per annum

Tariff	Quarterly Supply Charge	Supply Rate Cents per kw.hr
M - Domestic Light & Power	\$69.40	32.57
C - Charitable Institutions	\$69.40	32.57
J – Off Peak Hot Water		14.88
S -General Supply	\$69.40	35.06 (first 7500 kw.hr per qtr) 36.80 (thereafter)
SOLAR - Solar Feed-in Tariff		16.30
D & N – General Supply Time of Use	\$69.40	40.97 (peak 7am to 9pm Mon – Fri) 21.36 (other times)

Miscellaneous Fees & Charges

Special Meter Reading Fee (Vacating & Transfers within Roxby Downs)	\$40.00 9am to 4pm business days \$92.50 after hrs
New Account Fee. (Includes Special Meter Reading Fee)	\$82.50 9am to 4pm business days \$132.50 after hrs
Reconnection Fee (Non-payment)	\$95.00 9am to 4pm business days \$147.50 after hrs
General Account / Admin Fee. (Excludes Special Meter Reading Fee)	\$42.50
Late Payment Fees (Sent with reminder notices)	\$16.00
Meter Inspection Fee (Quick Test)	\$60.00
Meter Test Fee ((Full Test)	\$130.00
Meter Upgrade for Solar PV System Installation (Single Phase)	\$340.00
Meter Upgrade for Solar PV System Installation (Three Phase)	\$540.00
Meter Upgrade to Three Phase	\$450.00
Three Phase Service Pillar Replacement	\$800.00

Miscellaneous Fees & Charges (continued)

Bank dishonoured transaction	Bank fee incurred
Credit Card Transaction Fee	No charge
Other supply arrangements for vacant residences between tenants	At Council's discretion. Conditions apply - details available from Council.

Other Details

Interest on Late Payments	As determined per Council's Conditions of operation as authorised by the Minister for Mineral Resources and Energy.
Security Deposit	Up to 37.5% of a customer's estimated annual bill. Conditions apply (GST not applicable)
Other Fees	Details available from Council.

PAYMENT

You can pay your Electricity Bill by various methods including –

- in-person at the Council office (cash, cheque or credit card)
- by mail (cheque only)
- electronic funds transfer from your bank account
- electronic funds transfer using BPAY
- automatic direct debit from a savings or credit card account

Note – some options are not available for Flexipay (monthly instalments) and Payment Arrangements.

A copy of a Direct Debit Authorisation Form, is available upon request from the Council Office or available on our website www.roxydowns.sa.gov.au under "Forms".